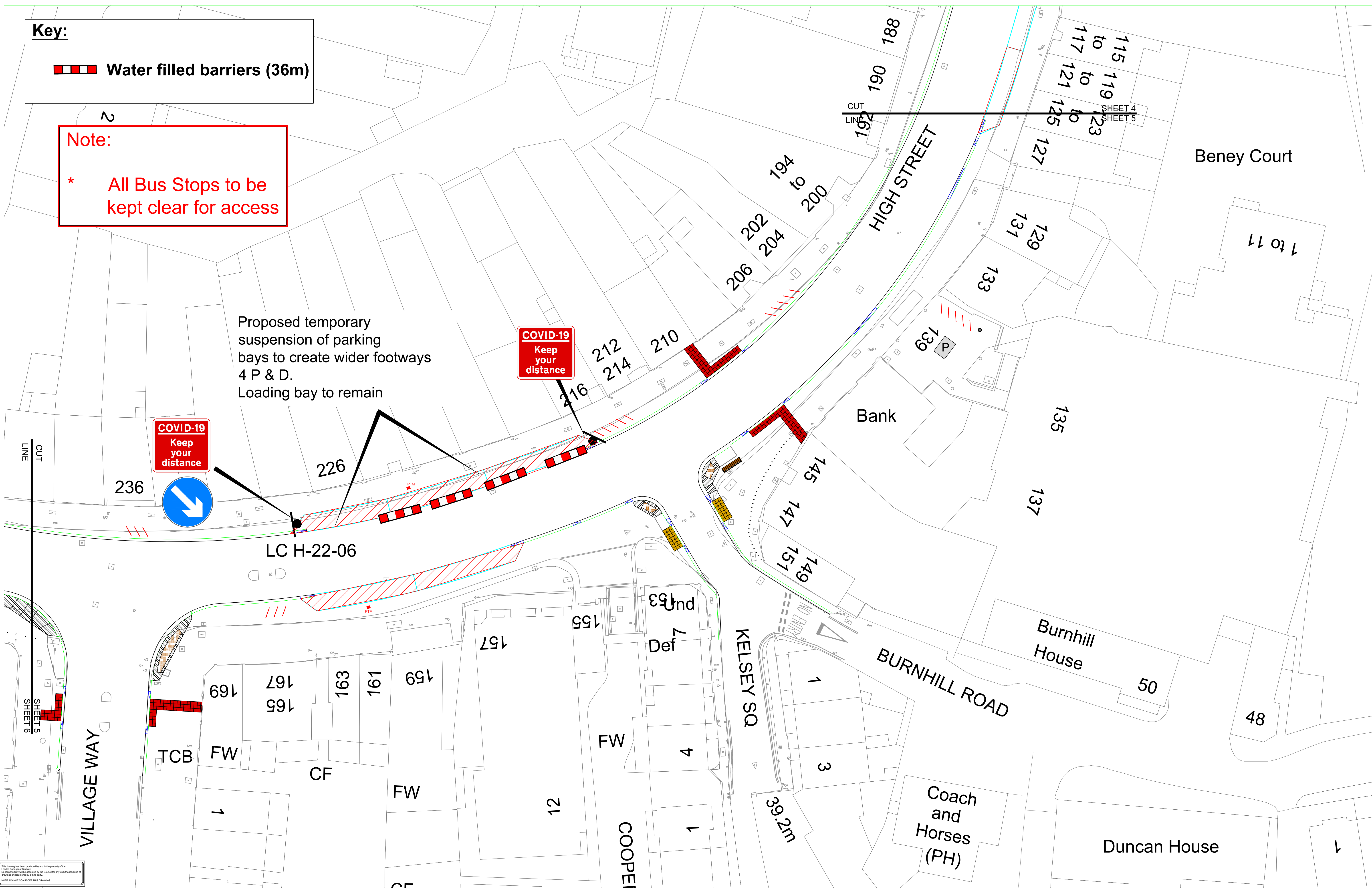


Key:
 Water filled barriers (36m)

Note:
 * All Bus Stops to be kept clear for access

Proposed temporary suspension of parking bays to create wider footways
 4 P & D.
 Loading bay to remain



This drawing has been prepared to aid in the planning of the project. It is not intended to be used as a legal document. No responsibility is accepted for any loss or damage caused by its use. It is the responsibility of the client to ensure that the drawing is used in accordance with its intended purpose.